

ROADWAY KIT

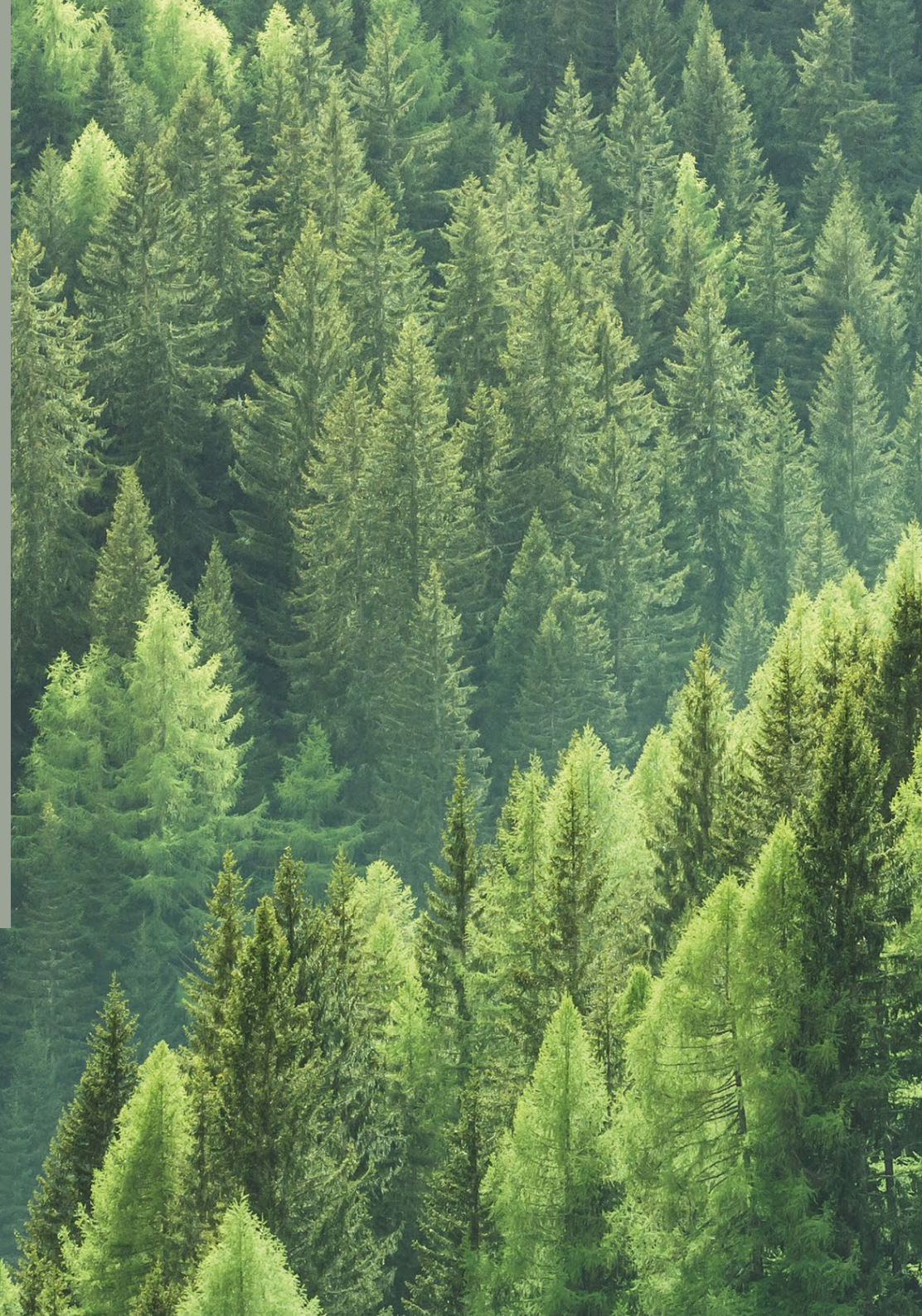


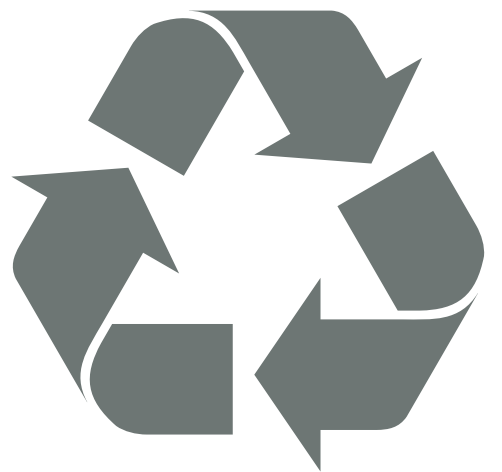
FAUN[®]
TRACKWAY

SUSTAINABLE TRACKS

Engineered with sustainability and performance in mind, our Trackway® panels are designed to minimise environmental impact while delivering long term reliability. Manufactured using advanced techniques and high-grade aluminium, each panel offers exceptional durability and a long operational lifespan. In contrast to plastic alternatives, which often degrade quickly and require frequent replacement, our aluminium Trackway® panels provide a more resilient and cost-effective solution.

Their robust construction helps to prevent ground damage by significantly reducing rutting, even under the weight of heavy vehicles and machinery. Once the panels are removed, the ground is left virtually untouched, preserving the natural landscape and eliminating the need for costly restoration work. Furthermore, our panels are 100% recyclable, aligning with our commitment to environmentally responsible practices across all sectors of operation.





The Roadway Kit improves the mobility of vehicles, cranes and other wheeled transportation by rapidly laying a temporary, aluminium access route. Thoroughly tried and tested, this modular system is the ideal solution on challenging terrain; including marshland, snow, sand, river fording and verges.

Comprising of your Trackway® solution of choice, a deployment system to match your budget, and accessories as standard, traversing difficult environments has never been easier.

Foot protection
required when
walking on
Trackway®.





**Improving vehicle
access across
challenging
terrain**

TRACKWAY[®] SOLUTIONS



CAPABILITY

- ✓ Suitable for wheeled vehicles;
- ✓ Used as a temporary or a more permanent installation;
- ✓ Ensures ground / environmental protection;
- ✓ Provides a high traction surface;
- ✓ Laid and recovered quickly and efficiently.

SPECIFICATION

- ✓ Aluminium panels, joined together by a tongue and groove joint;
- ✓ Designed to be constantly reused, has a long operational life and is recyclable;
- ✓ Withstands ambient temperatures ranging from -40°C to +60°C;
- ✓ Does not float and is suitable in flowing water;
- ✓ Anodised as standard and easily cleaned.



FAUN
TRACKWAY USA

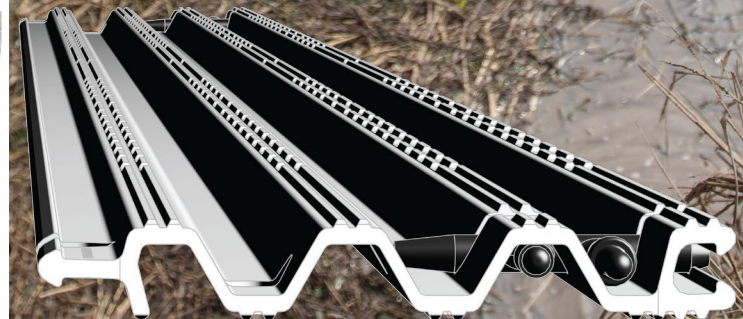


JCB

C40 TRACKWAY®

C40 Trackway® is designed to withstand repeated passes of vehicles with a gross weight of up to 100 tonnes, with a maximum axle load of 13 tonnes. Available in two widths, the C40 Trackway® can be deployed by either a 40PA, a Pushframe or by a Pushbar.

	Item	Dimensions per Panel	
		Width Option 1	Width Option 2
✓	Width:	3,354mm	4,200mm
✓	Length:	214mm	214mm
✓	Effective Length:	200mm	200mm
✓	Height:	31mm	31mm
✓	Weight:	15.4kg	19.2kg
✓	Weight / Area:	23.7kg/m ²	23.7kg/m ²



C90 TRACKWAY®

C90 Trackway® is designed to withstand repeated passes of vehicles with a gross weight of up to 150 tonnes, with a maximum axle load of 18 tonnes. Available in one width, the C90 Trackway® can be deployed by either a 90PA, a Pushframe or by a Pushbar.

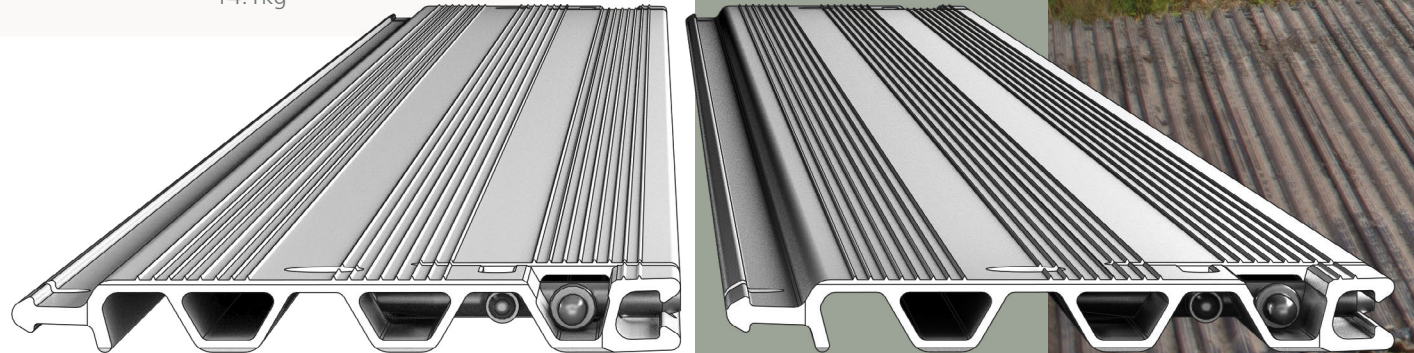
		Dimensions per Panel
	Item	Measurement
✓	Width:	4,572mm
✓	Length:	230mm
✓	Effective Length:	214mm
✓	Height:	32mm
✓	Weight:	31.9kg
✓	Weight / Area:	33.3kg/m ²



C20 TRACKWAY®

C20 Trackway® is a lightweight and rollable flat-topped Trackway® panel for short, mid and long-term access, designed to withstand repeated passes of vehicles with a gross weight of up to 100 tonnes, with a maximum axle load of 13 tonnes. Its profile traction surface improves grip and reduces slippage in challenging weather and ground conditions and it can be deployed by either a 20PA, a Pushframe or by a Pushbar.

		Dimensions per Panel
	Item	Width
✓	Width:	3,000mm
✓	Length:	214mm
✓	Effective Length:	200mm
✓	Height:	24.5mm
✓	Weight:	14.1kg





DEPLOYMENT OPTIONS

Mounted via a bespoke adapter plate and quick release hydraulic couplings to a compatible Material Handling Equipment host machine, our PA systems will also transport and store your Trackway®. The Trackway® is coiled onto a Spool which can be replaced as required once the first roll of Trackway® has been laid.

40PA

Efficiently deploys and recovers up to 40m of C40 Trackway® in under 5 minutes by two individuals.



		Dimensions	
	Item	Width Option 1	Width Option 2
✓	Width:	3,996mm	5,151mm
✓	Length:	1,862mm	1,862mm
✓	Height:	1,585mm	1,585mm
✓	Total Weight:	3,880kg	5,765kg
✓	Empty Weight:	500kg	590kg
✓	Spool:	310kg	330kg

90PA

Efficiently deploys and recovers up to 30m of C90 Trackway® in under 5 minutes by two individuals.

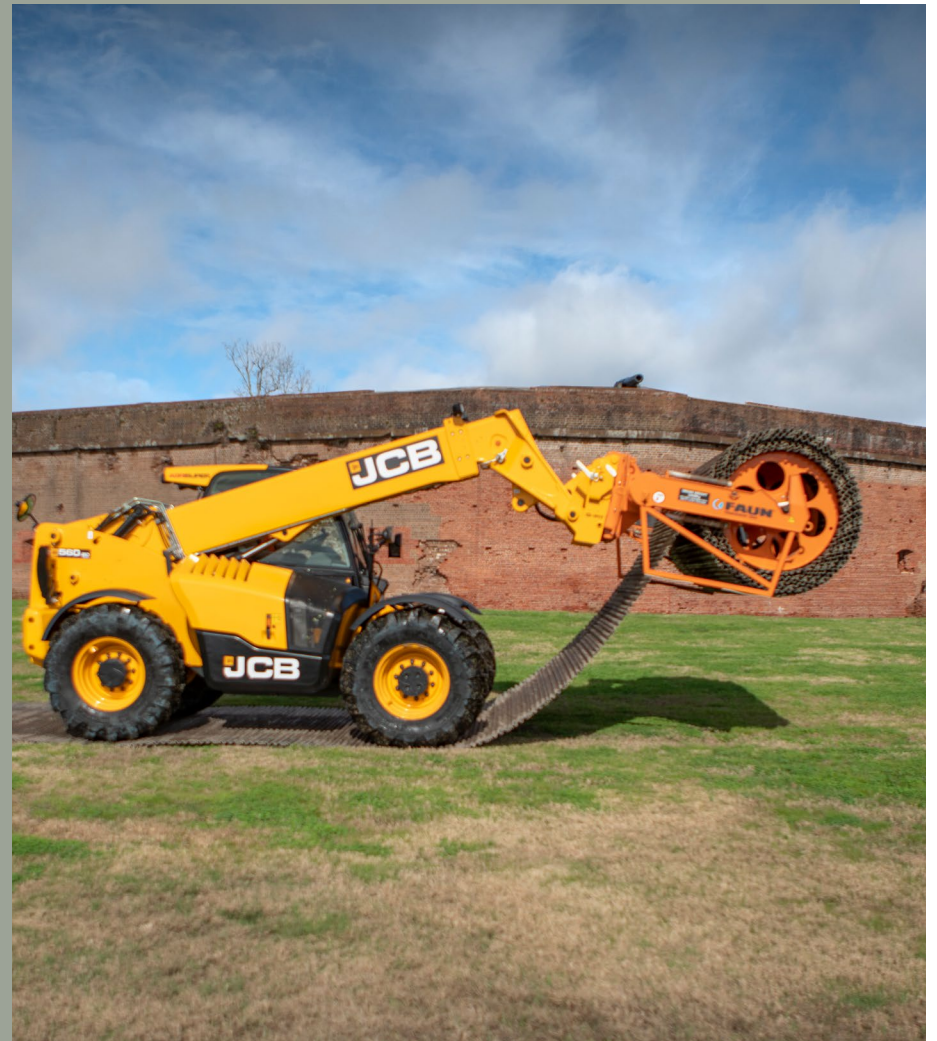
	Item	Dimensions
✓	Width:	5,704mm
✓	Length:	1,730mm
✓	Height	1,642mm
✓	Total Weight:	6,458kg
✓	Empty Weight:	1,780kg
✓	Spool:	945kg



20PA

Efficiently deploys and recovers up to 40m of C20 Trackway® in under 5 minutes by two individuals.

	Item	Dimensions
✓	Width:	3,650mm
✓	Length:	1,920mm
✓	Height	1,524mm
✓	Total Weight:	3,630kg
✓	Empty Weight:	1,450kg
✓	Spool:	670kg







PUSHFRAME

Manufactured from steel, and painted as standard, the Pushframe is designed to roll out and recover up to 50m of C40 Trackway® or C90 Trackway® by use of a compatible host machine with a quick hitch, or suitable hitch.

	Item	Dimensions
✓	Width:	1,311mm
✓	Length:	853mm
✓	Effective Length:	1,113mm
✓	Weight:	260.4kg

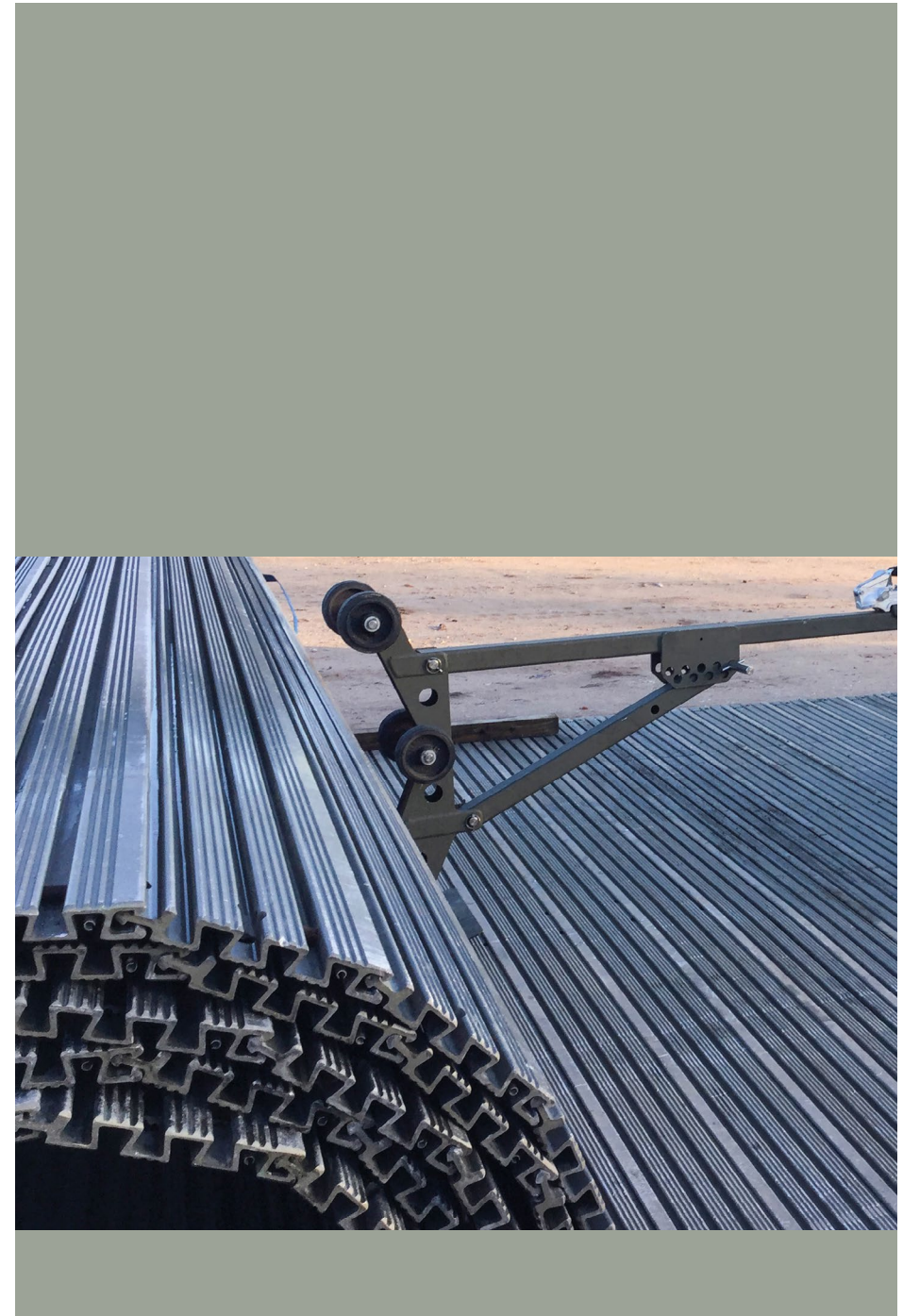
Dimensions are host machine dependent.
Above dimensions based on JCB 3CX, 4CX, 436

PUSHBAR

The Pushbar is a galvanised steel device with plastic wheels, designed to roll out and recover up to 40m of C40 Trackway® or 30m of C90 Trackway® by use of a vehicle with a minimum of 3,500kg tow capacity, and either:

1. A towing hitch or pin suitable for a 76mm diameter towing eye;
2. 50mm trailer towing hitch ball.

	Item	Dimensions	
		Stowed	Deployed
✓	Width:	518mm	518mm
✓	Length:	2,225mm	2,256mm
✓	Effective Length:	366mm	975mm
✓	Weight:	63kg	63kg



C50 TRACKWAY®

C50 Trackway® is designed to withstand weights of up to 15,000kg per axle (subject to sub-base and layout), and can be deployed in either a brickwork or straight configuration depending on the requirement. Providing a continuous, trip-free surface, the panels are connected by hand longitudinally with an overlapped joint, and fastened together with a flush bolt. Panels which are laid in a straight configuration are connected horizontally with a connecting bar.

		Dimensions per panel	
	Item	Full Panel	Half Panel
✓	Width:	3,000mm	1,500mm
✓	Length:	2,500mm	2,500mm
✓	Effective Length:	2,452mm	2,452mm
✓	Height:	52.5mm	52.5mm
✓	Weight:	261kg	131kg





AREA MAT

Full panels in a straight configuration or full and half panels in a brickwork configuration; providing an area of any size to be constructed for the safe recovery of aircraft.

ROADWAY

Full panels in a straight configuration; designed to provide a 3m wide temporary access route to allow vehicles to safely travel over the harshest of ground conditions.

WALKWAY

Half panels in a straight configuration; a trip-free, continuous surface area of 1.5m wide, for the safe use of pedestrians requiring access to an aircraft.



FAUN Trackway Limited

Member of the KIRCHHOFF Group

Unit 6, Bryn Cefni Industrial Estate
Llangefni, Anglesey, North Wales
LL77 7XA, UK

Tel: +44 (0) 1248 722 777

Fax: +44 (0) 1248 750 490

info@fauntrackway.co.uk

www.f auntrackway.co.uk

Images for Illustration Purposes Only

Registered in England and Wales 09283749

All content © FAUN Trackway Limited 2026. All Rights Reserved